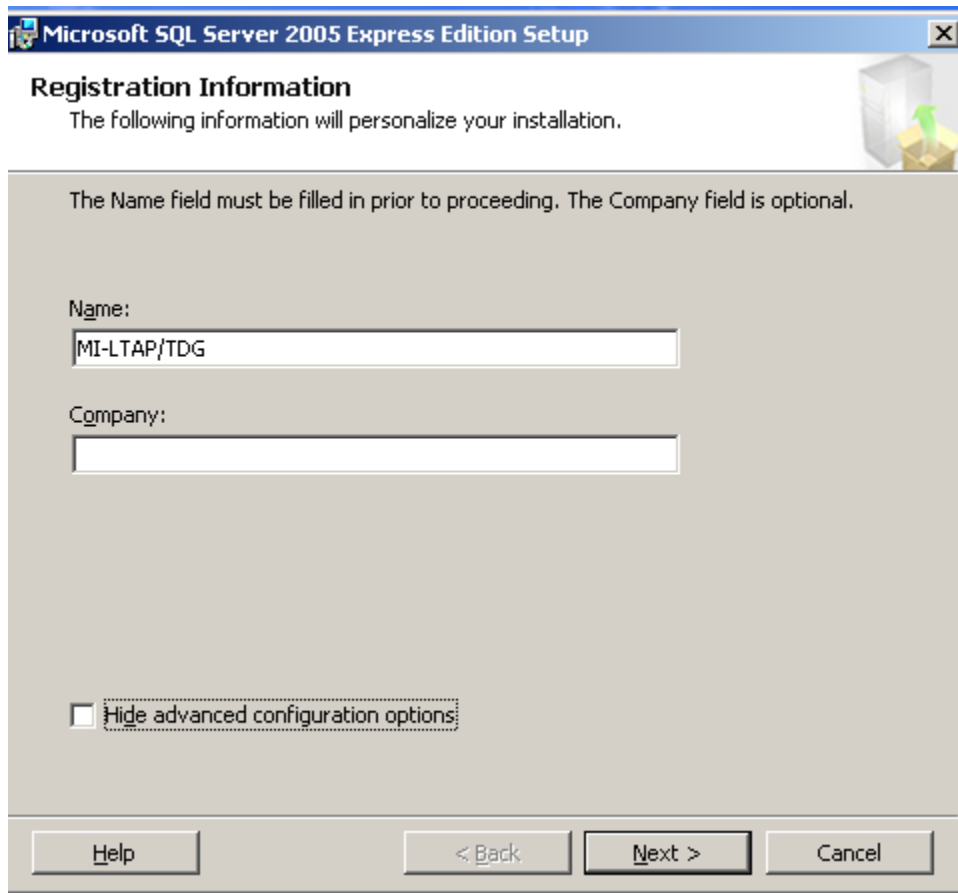


Installing SQL Express 2005 Manually

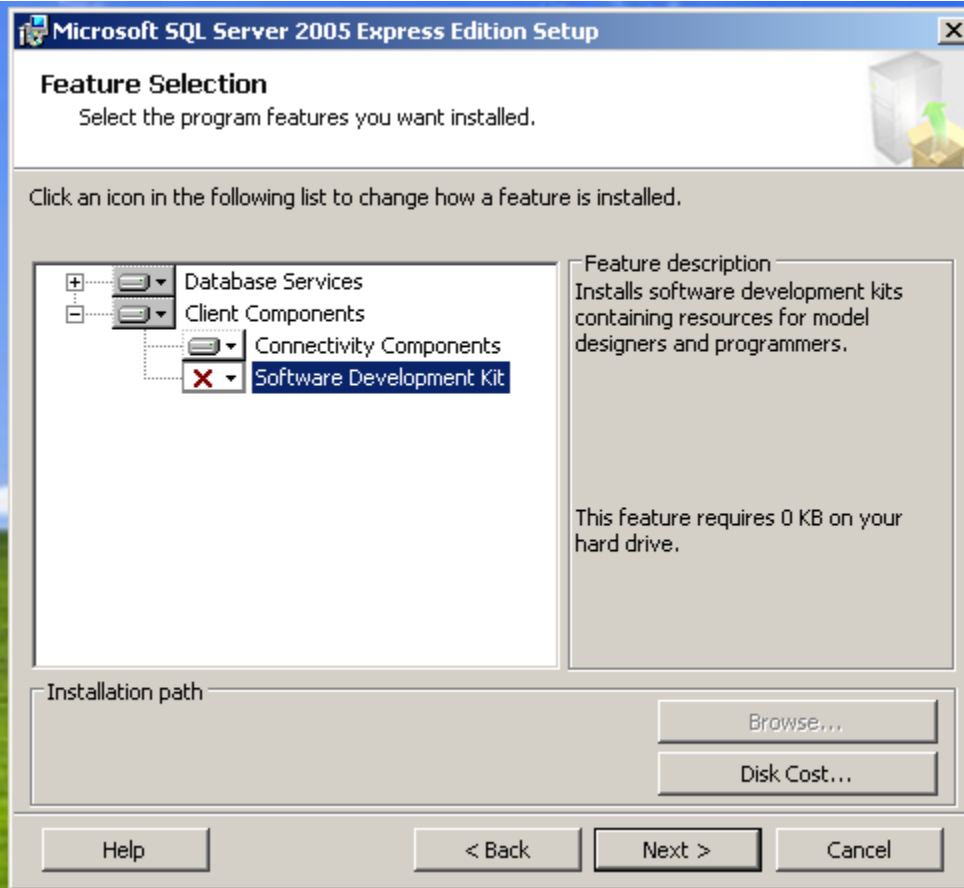
(so it works with MERL/Roadsoft)

If you are going to manually install SQL Express 2005, here are some steps (during install) to ensure that MERL and/or Roadsoft are able to connect:

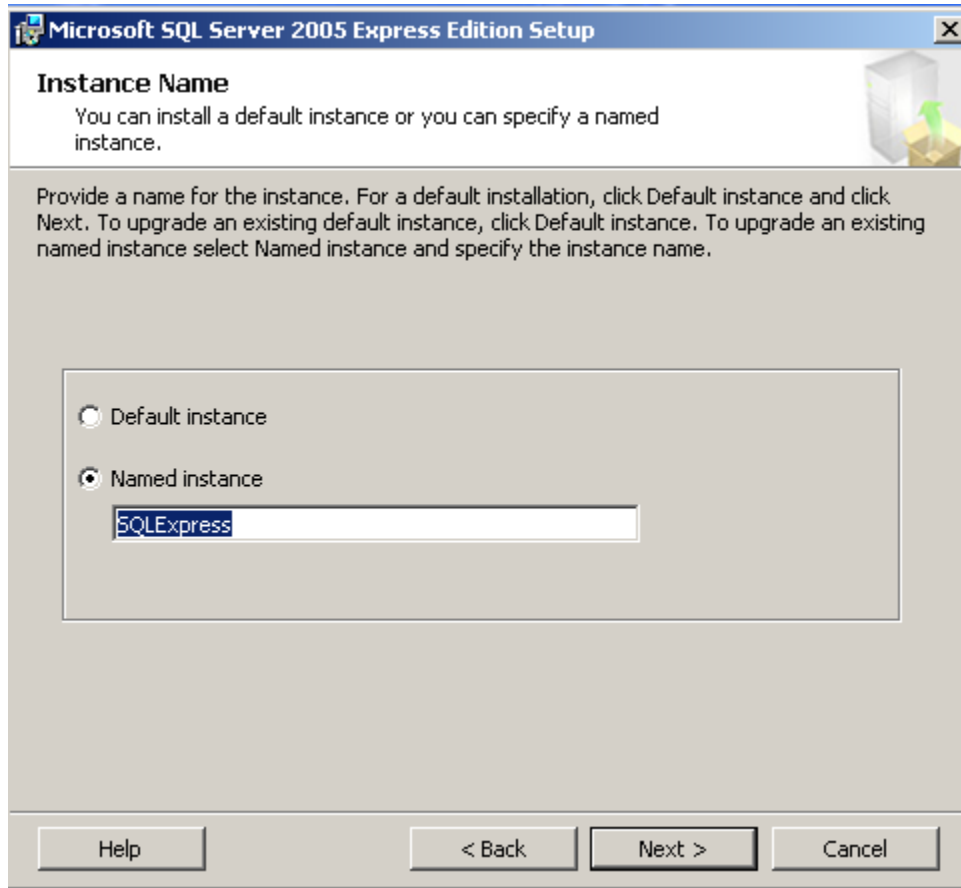
Registration Information: Uncheck 'Hide advanced configuration options'



Feature Selection: Mark 'Database Services', 'Client Components', and 'Connectivity Components' for installation.

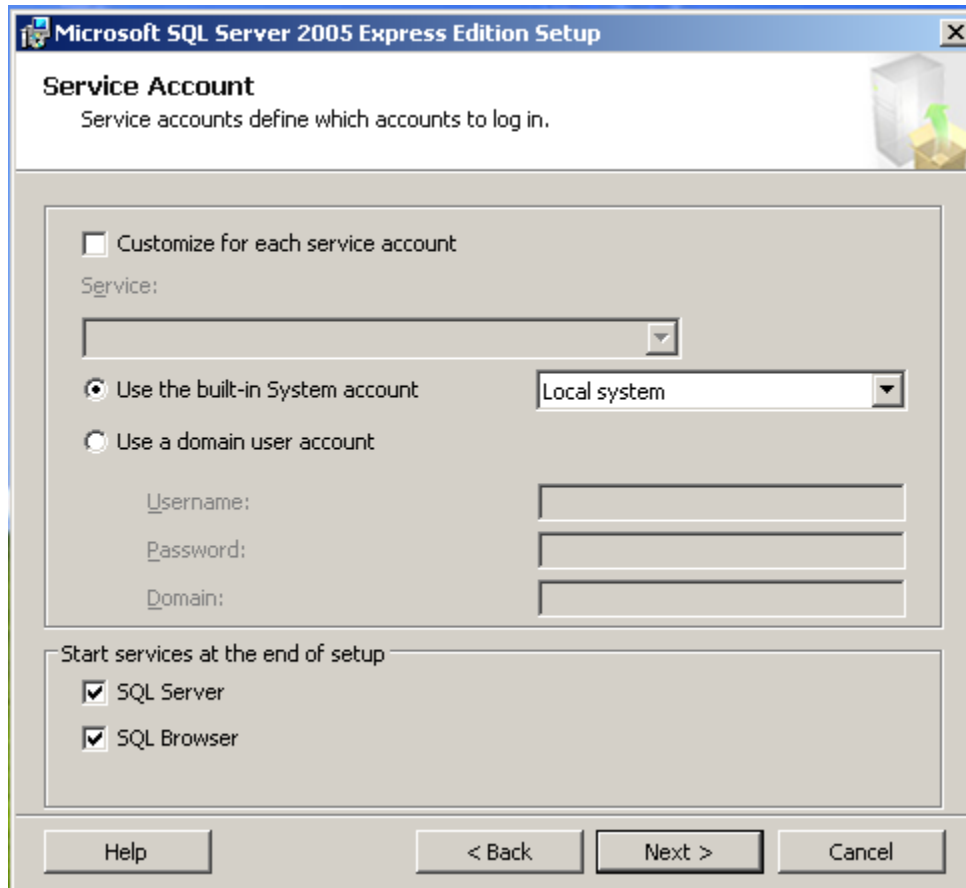


Instance Name: Give it a Named Instance (such as SQLExpress or TDG):



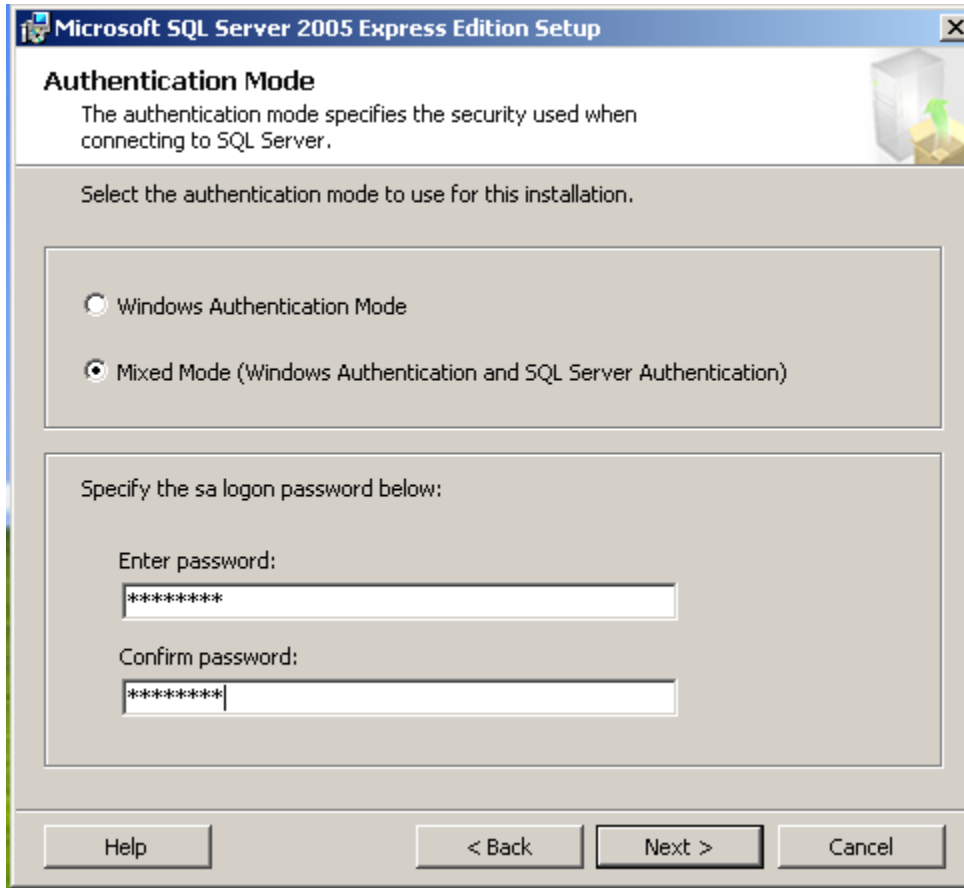
(Note: Avoid using 'MERL' or 'Roadsoft' for the instance name.)

Service Account: Use 'built-in' System account 'Local system' and ensure 'SQL Server' and 'SQL Browser' are marked to start:



The screenshot shows the 'Service Account' dialog box in the Microsoft SQL Server 2005 Express Edition Setup. The title bar reads 'Microsoft SQL Server 2005 Express Edition Setup'. The main heading is 'Service Account' with the subtitle 'Service accounts define which accounts to log in.' Below this, there is a checkbox for 'Customize for each service account' which is unchecked. A 'Service:' dropdown menu is empty. Two radio buttons are present: 'Use the built-in System account' (selected) and 'Use a domain user account'. The 'Local system' dropdown is selected under the first radio button. Below these are input fields for 'Username:', 'Password:', and 'Domain:'. At the bottom, there is a section 'Start services at the end of setup' with two checked checkboxes: 'SQL Server' and 'SQL Browser'. Navigation buttons at the bottom include 'Help', '< Back', 'Next >', and 'Cancel'.

Authentication Mode: Select 'Mixed Mode' and enter a password for the 'sa' login.



Following these steps will ensure that MERL or Roadsoft will be able to connect to this SQL Server instance and run in stand-alone mode. To allow other network users to connect to this SQL Server instance, see '**Manual Settings to Allow Multi-User Connections to a SQL Express Instance**'.